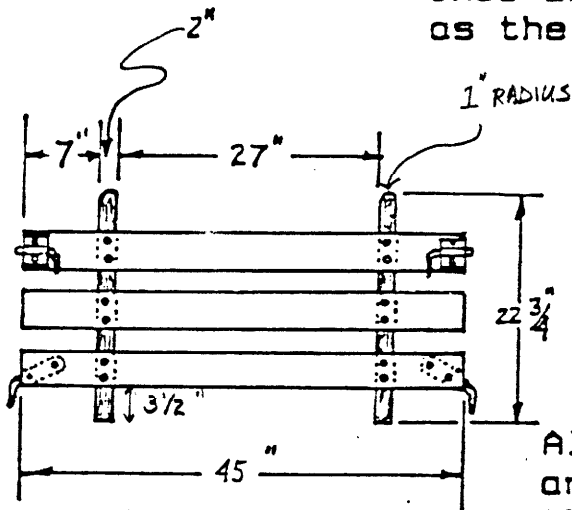


WWII ONE TON TRAILER

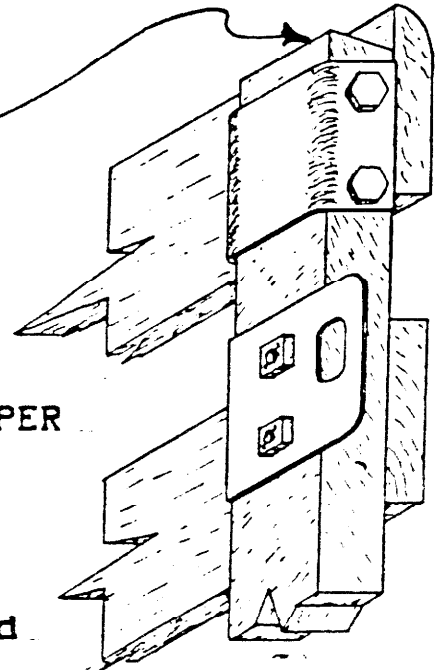
SIDE RACKS & TOP BOWS

This angle is the same as the top bows



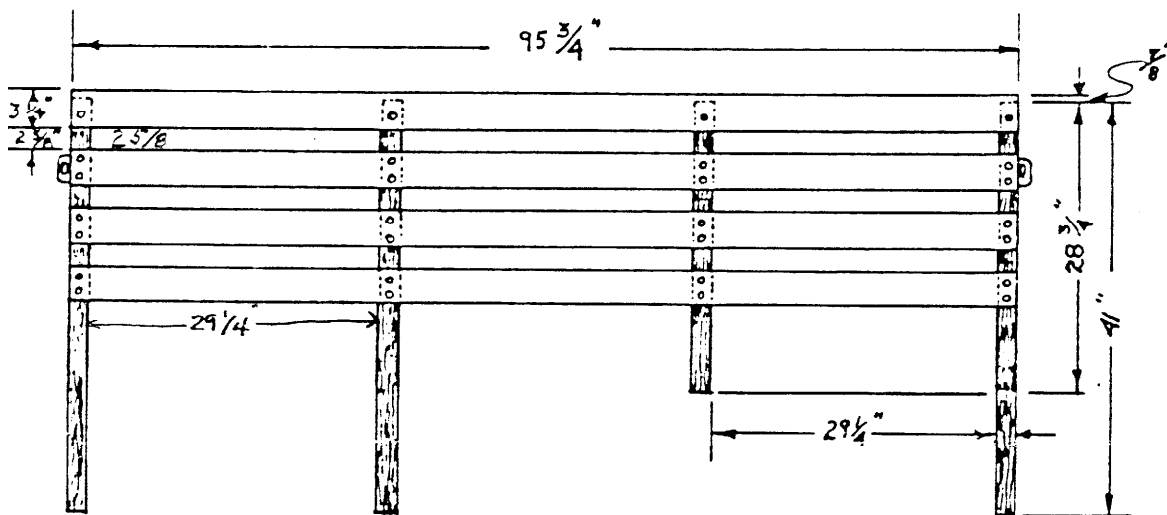
END RACK

DETAIL OF UPPER SIDE RACK

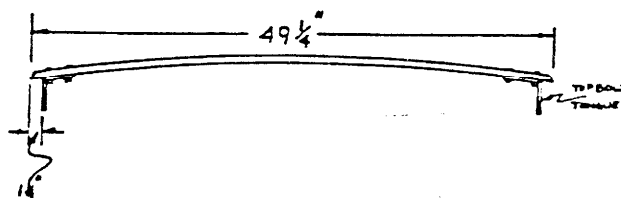


All bolts are 1/4" and all nuts are the square type and are staked instead of having lock washers

Side slats are bolted on two 1/4" X 2-1/2" step per upright except for the slat which has only one per upright. The bolt space is 1-3/4" between bolts the dually bolted slats.

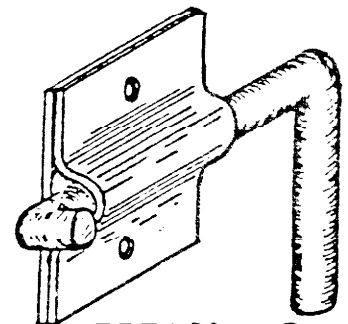


TOP BOW



Top Bows can be cut from "M" 2-1/2 ton truck bows as the cut approx. the same both.

Side horizontal slats are 3/4" X 3-1/4" hardwood (oak or ash). Uprights are 1-1/4" X 2" of the same type of hardwood.



DETAIL OF RACK LATCH